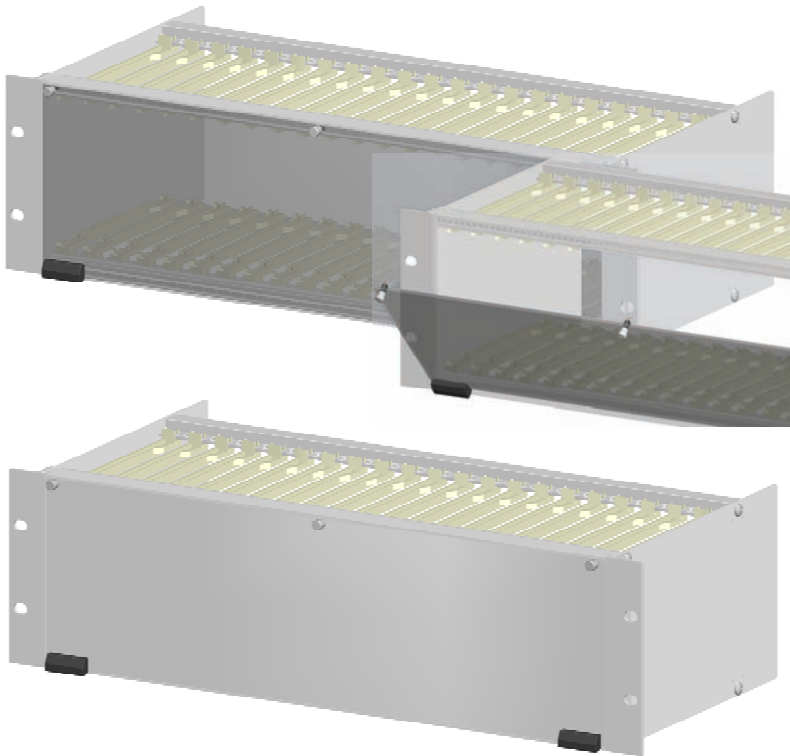


## Hinged Door Panels for DIN Subracks

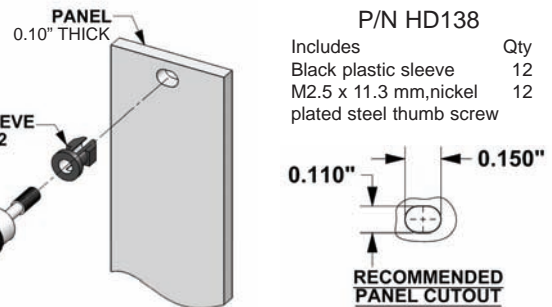


VectorPak™ subrack hinged door panels screw directly into lower M2.5 tapped strip and secure at top M2.5 tapped strip with M2.5 captive screws. Doors can be added to any DIN subrack without exceeding 3U or 6U vertical height limitation. Aluminum doors are brushed aluminum with clear irridite finish. Polycarbonate doors are clear to light grey. Solid front or rear aluminum panels attach to rack frame with M2.5 captive screws.

- VectorPak™ Hinged Front Door Front Panels for Subracks
- VectorPak™ Solid Front/Rear Panels
- Solid 6061 Aluminum or Polycarbonate (0.100"TH)

Part No.	Description
HFP3U-84	84HP door with captive screws & hinges, 3U, 6061 aluminum
HFP3UC-84	84HP door with captive screws & hinges, 3U, polycarbonate
HFP6U-84	84HP door with captive screws & hinges, 6U, 6061 aluminum
HFP6UC-84	84HP door with captive screws & hinges, 6U, 6061 polycarbonate
FP3U-84	Front Panel, 5.06" H x 16.80" W x 0.10" Thick, 6061 aluminum
FP6U-84	Front Panel, 10.31" H x 16.80" W x 0.10" Thick, 6061 aluminum
BP3U-84	Rear Panel, 5.06" H x 17.00" W x 0.06" Thick, 6061 aluminum
BP6U-84	Rear Panel, 10.31" H x 17.00" W x 0.06" Thick, 6061 aluminum

## M2.5 Captive Thumb Screw



Fan Trays & Accessories

## 19" Fan Trays



P/N FT1U-6



P/N FT1U-3

Vector fan trays are fully assembled, factory tested and fit into standard 19" racks. Fan trays feature solid state, brushless fan motors and include DC mating connector housing and pins. All electrical components and finger-guard covers are UL approved and recognized. Filtered versions available

### 12 VDC Fan Tray Assemblies

(Molex power connector, mating pins & housing included)

Part No.	Air Speed (CFM)	Frequency	Noise dB (A)	Dimensions
FT1U-3	89	50/60Hz	52	19.0" W X 1.72" H X 7.75" D
FT1U-6	89	50/60Hz	52	19.0" W X 1.72" H X 12.95" D
FT1U-9	89	50/60Hz	52	19.0" W X 1.72" H X 16.80" D

### 115VAC Fan Tray Assemblies

(includes power cord)

Part No.	Air Speed (CFM)	Frequency	Noise dB (A)	Dimensions
FT1U-3AC	70	50/60Hz	52	19.0" W X 1.72" H X 7.75" D
FT1U-6AC	70	50/60Hz	52	19.0" W X 1.72" H X 12.95" D
FT1U-9AC	70	50/60Hz	52	19.0" W X 1.72" H X 16.80" D

# Mouser Electronics

Authorized Distributor

Click to View Pricing, Inventory, Delivery & Lifecycle Information:

Vector:

[BP3U-84](#) [FT1U-6AC](#) [FT1U-3AC](#) [FT1U-4AC](#) [FT1U-6](#) [FT1U-2](#) [FT1U-3](#) [BP6U-84](#) [HFP6U-84](#) [HFP6UC-84](#)